



PSYCHIC RESEARCH NEWSLETTER

17

VOL. 4 No. 5 Sept. - Oct. 1987

THE MARK IV DELAWARR THOUGHT-PHOTOGRAPHY CAMERA

In our laboratory we have the Mark model of a camera manufactured by the Delawarr Laboratories in the 1950's. This camera was designed to capture on film the subtle vibrations of a witness (a sample of the vibrations of a person or object) either sputum or a drop of blood, and transfer these vibrations onto a photographic image. There are three significant factors involved in operating this equipment: 1) the instrument itself, 2) the photographic plate (glass or film), and 3) the operator. One of the major problems in the operation of this camera is the necessity of charging the plate prior to using the camera.

The camera that we have now was formerly in the possession of Lavender Dower and Elizabeth Boerlein. When they attempted to obtain pictures by loading the plates in the wooden holders, no images were produced. When the plates were loaded by Cort'e, the assistant for George de la Warr, hundreds of pictures were obtained with this system. A vital force or charge must be translated to the film in order for a picture to be created in this camera.

It is my belief that this is very analogous to electro-photography in which a plate is charged by the corona discharge in a electrophotographic copier. The charge is acted on by light, producing an image on the drum,

transferred by the toner application to the paper, and fixed to the paper by heat. In the case of the Delawarr camera, I felt that a subtle energy charge was necessary and could be created by the use of a single-terminated, four-sided meditation crystal.

An opportunity presented itself for me to visit with David Tansley in England. He arranged a meeting with the two ladies at their home in Oxford, England. We agreed on a research protocol, 1) I would not touch the plate; Elizabeth Baerlein would load the plate into the holder. 2) I would charge every other plate with the crystal, in the light. 3) Lavender Dower would test, with a pendulum, the energy that was being accumulated in the plate. The three of us would decide when we had a fully charged plate.

A crystal was held four to six inches over the plate in the wooden holder. I drew my breath in and began to pulse my breath into the plate. They immediately noted a change in the reading on the pendulum. When we came to a certain numeric value, we stopped and asked the length of exposure that was required. The answer was 14 seconds, which was noted. The holder was marked and we decided on observing the heart chakra of my body. They set this rate into the camera, after I put a witness of a drop of my sputum on the witness plate. The other sets of values were

P. 2

for the vibrational rate of my own body and the earth's magnetic and geomagnetic fields which surrounded Oxford.

Now it was time to try our first exposures. I stepped back about 40 feet from the camera and said "Let's take a frontal view of my body" and faced the camera. They randomly chose one of the plates, put it into the camera, and turned on the switch for 14 seconds. I felt nothing in my body and noted that to them. The next plate was loaded and when the switch was turned on I immediately felt a pressure in the solar plexus and thymus region of my body. My body began to sway and I noted this effect verbally to them at this time. They developed both plates, placed them in the acid stop bath and then into the hypo. The first plate had not been charged and was totally free from image or any fogging. The second plate was excessively overexposed and would not clear in the hypo bath for five minutes. I then reached in, touched the plate, and when I lifted it out from the hypo into the red safe light it immediately cleared. There was an image of a spiral of energy on the glass plate, with points of light scattered throughout the plate.

The experiment was repeated three times in a row with exactly the same results. An untreated plate in the Delawarr camera gave no image and the treated plate produced images. I then said, "Let us see what a side view would look like." We followed the same procedure with side views and now we had a three-fold flame emerging from the plate. This was repeated a number of times. These events were observed by

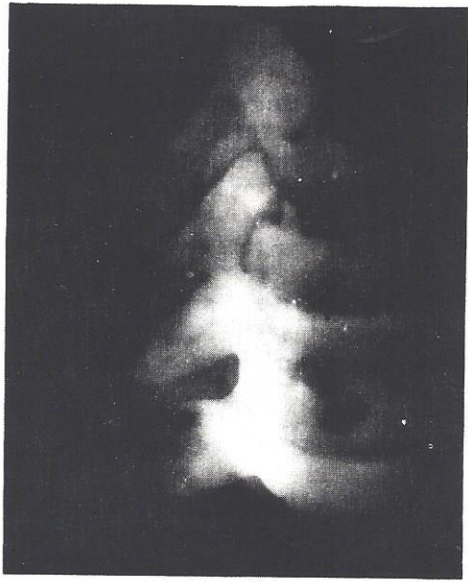
David Tansley, Lavender Dower and Elizabeth Verline.

The photographic glass plates were Ilford ordinary #N.30 glass, with an Ilford meter setting of 16^o and the speed group A, black and white. The photographic developer was B.72 and the fixer was Hypo (Sodium Hyposulfate). I left the crystal with the two ladies and they worked for months after I left with no apparent success in producing any images.

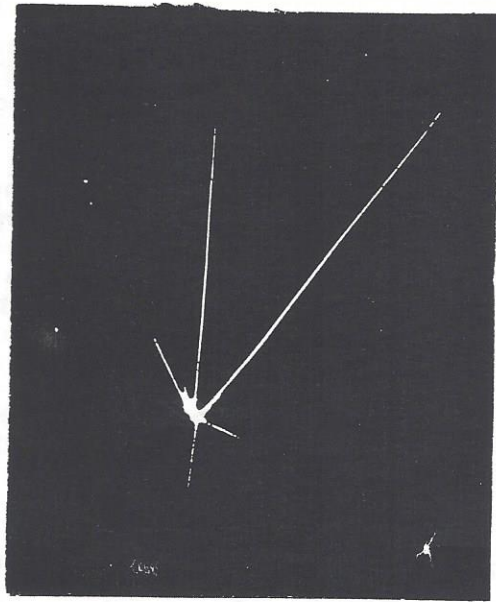
Images can be formed on photographic film purely by the intention of the operator as in the case of Ted Serios, but there is no control over the image production or the capacity to get repeatable results in any one event, as we did in the work together with Elizabeth Baerlein and Lavender Dower.

What does the camera contain? When Lavender Dower loaned us the camera, we took it apart, carefully measured and photographed the equipment. The lower and larger box contains three chambers, with the dimensions of the "Kings Chamber," in which an electrical vibrator produces a tone. There are 12 dials in three rows. They are attached to various lengths of wire that lead to a magnet which is set in a vertical position. Two of these units are identical and they are tuned by a rubbing plate. The third unit is a spiral of wire which can be tuned to various positions on the ascending or descending spiral form. This, too, leads to a magnet set with the north pole in the up position and is tuned accordingly. There is another box on

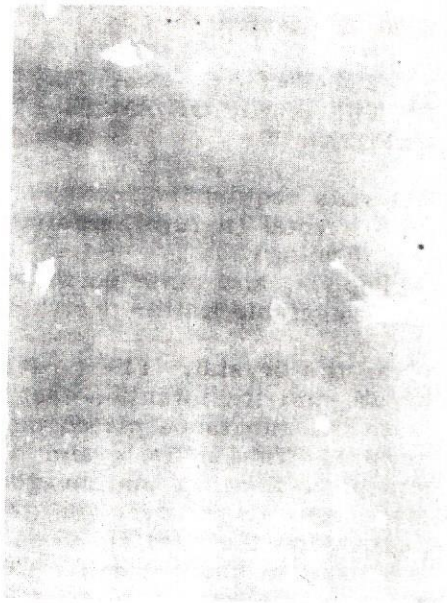
PSYCHIC RESEARCH, INC. NEWSLETTER C VOL.4 NO.5 SEPT.-OCT. 1987
(Published 6 times per year) Editors: Dick Ball, Dr. Marcel Vogel & Jennet Grover. P.R.I., 1725 Little Orchard St., Unit "C." San Jose, CA 95125.
408/279-2291. Subscriptions are \$25.00 for 12 issues. Back issues are \$4.00 each. Psychic Research, Inc. is a non-profit corporation using scientific research and education to aid mankind.



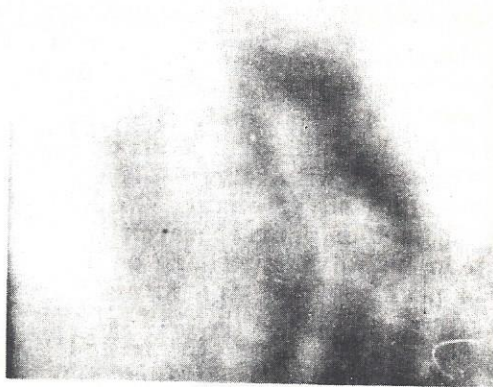
SPINAL COLUMN



COPPER SULFATE CRYSTAL



CONTROL



SIDE VIEW, HEART CHAKRA

P. 4

top which is separated by posts. This holds the film plate holder and contains within it three parabolic reflectors aligned to each of the magnetic rods. The focal point of the parabolic reflectors is the glass plate. The plateholder is completely light tight. To operate the equipment, it is rotated until it is facing due west.

Our research using this camera has been dedicated to the study of water which has been structured by treating with a crystal. We have seen remarkable results in the form of patterns of vibration coming from the water which look like the patterns seen in a Wilson Cloud Chamber, reflecting the high energy particles produced by a cyclotron. The following set of pictures was taken from the original plates produced by this camera in Oxford, England.

There were implications from George de la Warr's work that we can move, with a camera like this, in and out of time. And we can precipitate on film the three physical states of matter.

(Ed. Note: We have a workbook for sale on Thought Photography, with a copy of the original de la Warr and Ruth Drown patents. See center section).

A CRYSTAL MEDALLION IS NOW AVAILABLE FROM P.R.I.

Our newest research device is a Crystal Medallion. This medallion contains a rounded, faceted quartz crystal mounted in a wooden triangle bordered with silver. It comes with a sterling silver chain. We suggest that as part of your research the medallion can be worn anywhere on the body (as a neckless over the witness area, in your pocket, or pinned on your clothing). Those of you that purchase this device please return your Medallion Research Information Form.

Following our research with the earlier pendant which we had designed,

we found that the combination of wood, metal and crystal had a significant effect and that there was an advantage to separating the crystal from the metal. We feel that this design has the ability to be more effective on the energy systems in and around the body.

These attractive medallions are \$195.00 plus \$5.00 shipping and 7% sales tax for California residents. Expect 4-6 week delivery. See the center section to order.

PATENT APPLICATION FOR THE STRUCTURING OF WATER

After three years of research on the structuring of water we have finally applied for a patent. Our ultimate goal is to produce devices that will have home, industrial and agricultural applications.

We are unable to disclose any further information at this time. We will be making this technology public as soon as possible.

EXPERIMENT NO. 62 AMPLIFICATION OF THE SENSE OF TASTE BY THE CRYSTAL

Materials required:

- A crystal (natural, meditation or healing)
- Pepper, and other condiments or vegetable matter

Clear the crystal. Charge it with breath and the intention that you will taste the substance placed on the crystal. Take a few grains of pepper and place them on the charged crystal. Place your finger over the grains of pepper, on the crystal, close your eyes and draw in your breath. Create an image of the pepper in your mind. Pulse your breath and project the image into the crystal. Clear off the grains on the surface of the crystal and wash

your hands. Hold the crystal in your hand and slowly draw your breath in. Put your attention on your taste buds and see if you experience the essence of the pepper. Do this a number of times and you will find as you draw your breath in slowly there is a moment of contact where you experience the program stored in the crystal. You will have a distinct smell and taste of pepper. Clear the crystal and take a grain of pepper and put in on your tongue and experience the actual material. Compare the two experiences and you will be surprised how clear the charged crystal impression becomes with ^{So}ning. With other condiments and ^{Ve}getables do the same experiment. This work will expand your sensory faculty of taste and smell. You may need less food to satisfy your sensory appetite.

**EXPERIMENT NO. 63
EXPANSION OF THE SENSE
OF HEARING**

Materials Required:

- Tape recorder
- A favorite tape
- A crystal (natural, meditation or healing)

Charge a healing or meditation crystal with the essence of the music in the cassette by placing your left hand on the cassette containing the music holding the charged crystal in the right hand. Then slowly draw your breath in, willing that the musical impressions stored in the cassette will be transformed to the crystal. Hold the breath and pulse the breath into the crystal. Place the cassette into the tape ^{re}order, but before listening to the ^{Pl}ic draw your breath in again with the crystal in your hand. As you draw your breath in see if you can experience the essence of the musical composition. Turn on the cassette and listen to the

music with the crystal in your hand and observe the action of the music on your body. Put the crystal down and re-play the same composition and observe the effect on you body with and without the crystal.

Erase the crystal with breath, charge it, hold it in your right hand, and listen to the music again. Slowly breathing in and out. As you do this go the the mind of the composer of the music and try to experience the message he or she was trying to impart with the music. Doing this will open up a depth of feeling and understanding which transcends the sensory organ itself. It rings you to total focus and concentration. It evokes the sole into matter itself. The blind nature of musical composition in evoking the sole. Let us know your results and we will publish in the neswsletter.

THE GRAND INSTITUTE GRADUATES
by Judy Mingo

The weather was clear, crisp and delightful as my little prop plane nestled into Jackson airport. I had no idea what was in store for me. No one is here to meet me? Panic, then a solution... plastic money. The taxi took me out to the Grand Institute. Thus, began a very unusual last week of this years crystal therapy program.

The trees were starting to turn color and we all were going through dramatic changes, which may have been appropriate just after the harmonic convergence. Throughout the week, the attendees continued to be a source of strength to each other. It was healing, healing, healing each other, themselves and the Grand Institute. This was the most profound, real learning and testing of life skills that I have ever experienced in a seminar.

On Thursday afternoon the group decided to go to a field and do a meditation. Lynn Albers led a Native American sound therapy technique to

P. 6

heal the area. People who had not been hugging and connecting were able to be a part of a grounded form, completing the process we had been struggling through. This grounding process is very similar to the closing off of the crystal therapy technique.

Thirty-two people attended this workshop. Eleven people attended all three workshops in Wyoming and are qualified for the Master's Practitioner Certificate. We were very proud of their accomplishments in mastering the techniques, their understanding, and their contributions.

These people completed their crystal therapy portion of the certification test successfully. Lynn Albers, Warren Barnes, Lori Esposito, Scott Heil, Judy Jones, Marilyn La Croix, Linda Lang, Marilyn Miller, Betsy Noe, Melissa Reynolds and Steven Seise.

The following people have completed two weeks and have received their certificates. Mary Goodner, Penelope Starr and Phyllis Valere. If you are interested in further information on Marcel Vogel's Masters Practitioners Certification program contact P.R.I. 408/279-2291

GILBERT "BEAR" PRESTON IS ALLEGED TO HAVE ABSCONDED WITH THE MONIES FROM THE GRAND INSTITUTE

Headlines leapt from the Jackson Hole News, "GRAND INSTITUTE FRAUD SUSPECTED" and "GRAND FRAUD ALLEGED AT CENTER." During the last of Marcel Vogel's three week-long presentations at the Grand Institute, the roof caved in for Rita Passalacqua, her husband Jack, and the staff of the Institute. The articles indicated that Richard "Mack" Simmons and Gilbert "Bear" Preston had left the Institute with \$150,000 unaccounted for or owed. This included registration fees and other investments. Rita Passalacqua is

quoted as saying, "We have no idea exactly how much is involved. All the bills and letters have been burned. I don't know how we'll ever account for it all."

Instead of cancelling the rest of the program, Marcel continued to serve the attendees and complete his contractual obligations. Marcel still has not received his fees for this and the last seminar that he presented in August.

A MAJOR DONATION BY THE CHARLSON RESEARCH FOUNDATION

We wish to thank the Charlson Research Foundation of Excelsior, Minnesota for their generous gift. This money is dedicated to mind over matter research and comes at a time when the funds were needed to continue this work.

BRAIN-WAVE PATTERNS AND THE CRYSTAL by Judy Mingo

Our state of consciousness, our awareness, is associated with different brain-wave patterns. One of the pioneer works in the "psychophysiology of consciousness" is that of Joe Kamiya from Langley-Porter Neuropsychiatric Institute, in San Francisco and Elmer Green of the Menninger Foundation in Topeka, Kansas.

Approximately 20 million brain cells are contained in the average brain. Each cell is capable of producing a small electrical current. This current is released after the cell has been energized to a certain level of potential voltage. This current acts as a pressure which pushes the messages and activities through the neurons or neuro-transmitters of the nervous system. The electroencephalogram (EEG) records this brain-wave activity by placing the electrodes on the scalp to measure the micro-voltage on a strip chart. The EEG however does not

represent the firing of any specific neuron, rather an average signal of many cells.

"Brain wave patterns have no concomitants. That is, there are no sensory processes by which we can detect the presence of brain wave activity. We can detect tense muscles, cold hands, or a pounding heart, but there is no way to sense brain wave activity. What we sense and control is not the brain-wave itself but a state of consciousness, a concatenation of subtle existential cues" (Green, Beyond Biofeedback).

The four principal rhythms are defined by their frequencies in Hertz. They have various mental states or degrees of arousal associated with them. All of these rhythms are present in us to some degree. They are associated with different parts of the brain.

1) Delta rhythm are approximately 1-3 Hertz, they are associated with deep sleep, and the hypothalamus area of the brain. 2) Theta rhythm are 4-7 Hertz and are associated with creativity and the early stages of sleep, and the limbic area of the brain. 3) Alpha rhythm are 8-13 Hertz, are related to alert, relaxed reactions, and the thalamic region of the brain. 4) Beta rhythm are 14-30 Hertz, are related to thought, effort and stress, are found in the center cortical area.

A major part of brain wave research has focused on the alpha wave pattern. The reason for this is that the biorhythm can be easily read because of its high amplitude or signal strength measured "as" or "in" microvolts. One microvolt is equal to one-millionth of a volt. Normal alpha patterns can be detected with the eyes closed. They reach a maximum of 80-90% of the total alpha rhythm. With the eyes open and the individuals rested and relaxed, the normal content of alpha is usually somewhere between 2 & 25%.

The alpha brain wave activities of

Zen meditators and yogis reported to be much higher than normal with their eyes open. Jack Schwarz and Ramon Torres have demonstrated dramatic, sustained alpha brain-wave activity, which is associated with calm, alert states while pain was being induced. The method that was used to induce pain was to insert 6" needles through the biceps and the cheeks of the researchers.

According to Barbara Brown, it is more useful to recall the relaxing alpha state with the eyes open while engaged in ones daily activities. This is because with eyes open, you have a greater potential for maximum learning. The second aspect of controlling alpha rhythm with the eyes open is its relationship with the oculomotor (ocular motor control of the eyeball) processes. Changes in the tracking, convergence, and lens accommodation will block or markedly attenuate the alpha rhythm from the occipital region of the brain. This effect can be mediated by teaching the mind to control the oculomotor process through alpha biofeedback. When you gain control of your alpha rhythm with your eyes open, you become aware of the subtle process of learning. According to Erik Peper, in Mind/Body Integration, Essential Readings in Biofeedback, "It is the wedge through which we join our conscious and unconscious processes using this paradoxical process - grasped with out grasping - we allow ourselves to open to an infinite world in which we can expand our own potential and participate in the restoration and maintenance of our psychic, spiritual and physical well-being."

Marcel Vogel participated in research at a university, that indicated that brainwave activity can be influenced by holding a quartz crystal and quieting the mind. The results were similar to these that occurred for the Zen meditators. While holding a six or eight sided Vogel

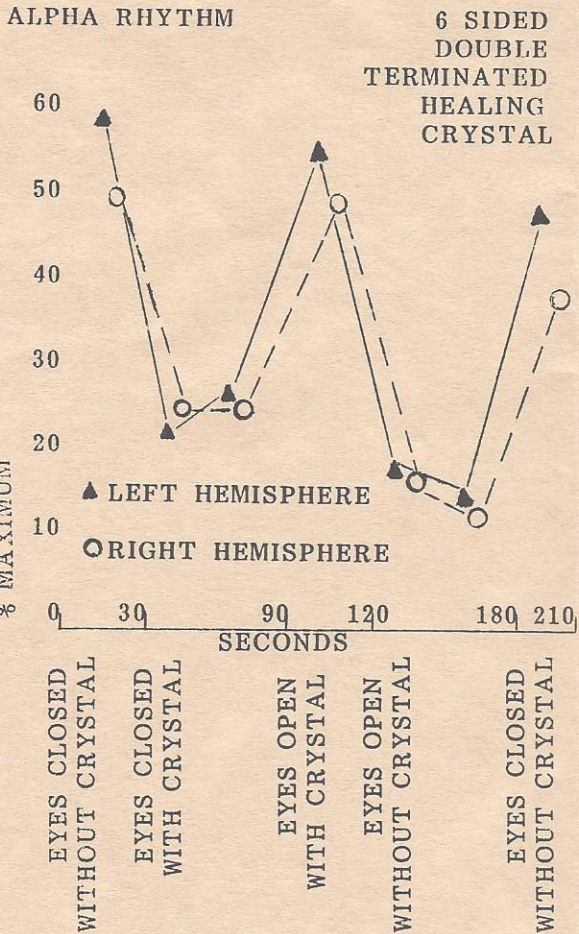
cut healing crystal with his eyes open, Marcel's alpha brain wave patterns increased approximately 60%, opposite of the findings of normal alpha rhythm with eyes open. Marcel's experimental procedure entailed a series of baselines: the eyes closed without a crystal; eyes closed with a crystal; eyes open with a crystal, and again eyes closed without a crystal. His intention was to compare his normal brain-wave activity without a crystal and the patterns with a set of specially cut crystals.

It is interesting to note that the earth frequency, 7.8 Hertz, is the theta-alpha border. Olga Worrall, a clinically proven healer, demonstrated the ability to emit this frequency into water while in a "healing state". Another interesting anomaly noted by Elmer Green, in Beyond Biofeedback, is the apparent harmonic relationship between theta and alpha waves. Theta is one half of the harmonic of the alpha waves.

In order to analyze these harmonic relationships a Cap scan would provide a full spectrum of all of the brain-wave patterns simultaneously. Further biofeedback and EEG research is needed to understand the relationship to crystals and states of consciousness.

BOOKS

Crystals: Perfect and Imperfect, Bennett, Hamilton, Maradudin, Miller, Murphy, Walker and Co., NY 1965
General Crystallography: A Brief Compendium, W. F. deJong, W. H. Freeman & Co., San Francisco, CA 1959
Optical Crystallography, 5th edition, Ernest E. Wahlstrom, John Wiley & Sons, NY, 1943
Crystallography and Practical Crystal Measurement Vol. II, A.E.H. Tutton, MacMillian and Co., Ltd., London, 1922
Crystal Power, Michael G. Smith, Llewellyn Pub., St. Paul, MN 55164, 1985
Magical Jewels of the Middle Ages and the Renaissance, Joan Evans, Dover Pub. Inc., NY 1922
Clearing Crystal Consciousness, Christa Fae Burka, Brotherhood of Life, Albuquerque, NM, 1985
Rocks & Minerals, Pat Bell & David Wright, MacMillian Pub. Co., NY 1985
Simon and Schuster's Guide to Gems & Precious Stones, Kennie Lyman, ed., Simon & Schuster, NY, 1986
A Guide to Minerals, Rocks, and Fossils, W. R. Hamilton, A. R. Woolley, A. C. Bishop, The Hamlyn



Pub. Group Ltd., London 1974
The Magic of Precious Stones, Mellie, Uyldert, Turnstone Press, Ltd., Wellingborough, Northamptonshire, U.K. 1981
Jewelry, Gem Cutting, and Metalcraft, William Baxter, M.A., Whittlesey House, McGraw-Hill Book Co. Inc., NY, 1938
Elements of X-Ray Diffraction, B. D. Cullity, Addison-Wesley Pub. Co. Inc., Reading, MA, 1956
Determinative Mineralogy and Blowpipe Analysis, Geo. J. Bush, John Wiley & Sons, Inc. NY, 1898
Getting Acquainted with Minerals, Geo. Hitchworth English, McGraw-Hill Book Co. Inc., NY, 1934
Minerals of California: Bulletin 173, Univ. of Calif. Los Angeles, CA 1956
Microscopic Determination of Nonopaque Minerals, 2nd edition, Esper S. Larsen & Harry Berman, U.S. Govt. Printing Office, 1934
Microscopic Determination of the Ore Minerals, 2nd Edition, M. N. Short, U. S. Govt. Printing Office, 1948
Optical Mineralogy, second edition, Austin Rogers, Ph. D., Paul Kerr, Ph. D., McGraw-Hill Book Co., Inc. NY, 1942
Minerals, Metals, and Gems, A. Hyatt Verrill, Grosset & Dunlap, NY, 1939
Dana's Manual of Mineralogy, James D. Dana, John Wiley & Sons Inc., NY 1912
Mineralogy: An Introduction to the Study of Minerals and Crystals, Edward Kraus, Ph.D. & Walter Hunt, Ph.D., McGraw-Hill Book Co. Inc., 1925
Gems and Gem Materials, Edward H. Kraus, McGraw-Hill Book Co. Inc., NY 1925
Gemstones, G. F. Herbert Smith, Pitman Publishing Corp., NY 1912
Gems, Mab Wilson, The Viking Press, NY 1967
The World of Jewel Stones, Michael Weinstein, Sheridan House, NY 1958
A Text Book of Precious Stones, Frank B. Wade, G. P. Putnam & Sons, NY 1918

Handbook of Rocks, James Furman Kemp, D. Van Nostrand Co., NY 1896
The Book of Runes, Blum, Ralph, St. Martin's Press, NY, 1982
The Stars and the Stones, Martin Brennan, Thames and Hudson, Ltd., London, 1983
How to Make and Use Talismans, Israel REGARDIE, The Aquarian Press, NY 1981

THE PATH TO SELF HEALING USING GOD'S LOVE AND CRYSTALS, by Robert Fritchie \$25.00. Bob was one of the original people at P.R.I. He has done a great deal of research on his own, after being inspired by Marcel's work. Bob is an excellent teacher and has his own perspective on crystals. He is in the process of developing a corporation to use the technologies developed by P.R.I.

LETTER FROM DAN ZAVELA

In 1977, a friend said, "Let's visit Marcel Vogel." Marcel was very supportive of my project, and has remained so throughout the years. Within days of the time I met Marcel, I was introduced to his friend Dr. James A. Patterson. I said to Dr. Jim, "I had thought that the alchemists were long gone."

Dr. Jim exclaimed, "What?!! Let me show you something." He went to his bookcase and brought out two small bottles.

I said, "They both look like they contain flakes of gold."

Dr. Patterson placed a magnet next to the side of one of the bottles, nothing happened and he asked, "What do you know about gold?" "It's non-ferrous; and therefore, non-magnetic," I replied.

Dr. Patterson then placed a magnet next to the second small bottle and all the gold particles clung to the wall where the magnet was. My mouth hung open in amazement. "I sent samples of this gold to several analytical

laboratories for their evaluation," Dr. Jim said, "They replied that it was 100% pure gold, and magnetic, and therefore, must have some iron in it."

Dr. Patterson with a mischevious, elfish grin chuckled like a kid and said, "This is an example of information transfer. The quality of the magnetic attraction of iron is transferred first to tiny polymer beads; then these beads are placed in with gold and heated until the polymer vaporizes. The information is then transferred to the gold."

Dr. Jim and Marcel share their interests in liquid crystals, water and alchemical research. Patterson has received approval of his clean water test standard by the E.P.A., as published in the Federal Register. Marcel had spoken of his work with liquid crystals under the microscope and how he noticed that these crystals would form into patterns according to images he had projected onto them. Marcel photographed some of the resulting crystal formations. Here again, as with Dr. Patterson, the ability of the mind was demonstrated to influence the physical characteristics of matter.

I experienced a major life change the night Marcel demonstrated an experiment which was later published in the P.R.I. Newsletter. He charged some drinking water in a glass and the participants compared its radionic rate, size of its field (with dowsing rods), and has taste to that of a control glass. The results were clear to all. The crystal charging had changed the water's physical characteristics.

Marcel has since measured this change in the water and in wine in terms of the O-H stretch of the molecules, the UV spectrum shift, and the water's pH value. I have often discussed with Marcel the importance of measuring the energy charge in the crystal itself verses the uncharged state. Marcel stated that this was an important objective to him as well and that he was

working on this. Finally, I feel Marcel, after years of work, is very close to a complete scientific documentation of the life energy effect and amplification of the crystal in quantifiable, repeatable terms.

It is my wish that a device to calibrate the energy charge in the crystal, based on Marcel's laboratory findings, will be produced soon. I anticipate such a device would use physical measurements as an index of the crystal's charge. I predict that this calibration device for scientific measurement will become a standard tool for future quartz crystal research. The controlled studies done on the effects of psychic laser producing repeatable, tangible results of immense practical value.

Dr. Rozanne Bazinet's study has convinced me that an uncharged, clear, natural quartz crystal by itself has no power except to amplify the vibration(s) it comes in contact with. However, the variables of the shape and the color of quartz crystal, as related to the effective amplification of psychic (life) energy, are areas of scientific inquiry that are still begging for controlled study and measurement. The shape of the crystal is important to achieving a noticeable result. A trihedron, tetrahedron, and sphere did not charge the water as effectively as my Vogel-Cut (TM) meditation crystal. I tried using the amethyst rod and found a similar result to the Vogel crystal but of a different "frequency." The shape, color, and quality of the crystals used to charge water have shown great importance. Marcel's designs are valid energy transducers of thought and psychic (life) energy into chemical, photo (light), and life energy changes as based on my exploratory, empirical study. Scientific wags have "pooh, poohed" such personal experimentation. However, controlled, valid study is not beyond the capabilities of an amateur investigator, and such exploratory work

is the path to keeping an open, accepting mind.

I am interested in the potential of the body to heal itself. A rose quartz crystal ball called out to me in a store. I had a touch of flu at the time and after holding the ball for five minutes the flu symptoms were gone. The next day the symptoms returned, the flu was not "cured," and no other rose quartz crystal ball has been as clear or effective in reducing the discomfort due to illness. I have been working on eliminating viral infections and if the technique continues to work, I will publish. As we understand more about these energies, I foresee a truly New Age of health, prosperity, peace and creativity. As the alchemists say, "All things are possible, but not everything is permitted."

REFERENCE FOR 1978 ARTICLES

VOL.4 NO.1: The Patterning of Thought
by Marcel Vogel, Ph.D.
: The Crystalline Structure of the

Body by Rozanne Bazinett, Ph.D
: The Mora Machine, Structured Water
and the Crystal by Bob Crane
: Closing the Circuit J. Mingo, M.S.
VOL.4 NO.2: Biological Superconduct-
ivity by Marcel Vogel, Ph.D
: Orthogonally Rotated
Electromagnetic Fields, Robt. Crane
: The Physical Nature of the Aura, &
an Addendum by Robert Crane
: Things to Ponder by Richard Ball
VOL.4 NO.3: Putting it all Together M.V
: Chamber for Accelerated Evolution,
Healing, Time Travel & the Trans-
formation of Consciousness, R. C.
: Third Anniversary of P.R.I., R. B.
: Was the Great Pyramid a Power
Generator by Robert Crane
: Broadcasting to Termites, J. Grover
VOL.4 NO4 : Where Two or More are
Gathered Together, There I Am, M.V
: Marcel's Visit to Dr. Popp
: Charging a Crystal by R. Crane
: Crystals in our Present-Future, R.C
: The Ark of the Covenant as an
Orgone Accumulator, N. Mikesell, M.S

MARCEL VOGEL'S WINTER AND 1988 SEMINAR SCHEDULE

NOV. 14-15 SAN JOSE, CA 6th Annual New Age Renaissance Fair, San Jose
Convention Center, Call 408/292-6716

MAY 15-22 CARRIBEAN CRUISE SEVEN DAY CRUISE & SEMINAR

Two persons cabin \$1,195 per person + seminar fee
Tree person cabin \$1,020 per person + seminar fee
Four person cabin \$ 935 per person + seminar fee
An additional \$350 seminar fee is due to P.R.I prior
to departure, for those taking the seminar. Space is
subject to availability, send your \$200 deposit to
Connie as soon as possible. Rates include port taxes
& round trip air fare from major cities to San Juan,
Puerto Rico. "The Song of Norway" will sail to St.
Maarten, St. John's Antigua, Martinique, St. Thomas,
& Barbados. A \$200 deposit check, no credit cards
accepted, must be in by January 10th, & the balance
is due March 10. Call Connie: 1-800/621-0854 Ext.331
or 408/252-5520 or to P.R.I., 408/279-2291

JULY SANTA CRUZ, CA DOWSING CONFERENCE AT U. C. SANTA CRUZ

JULY 20-24 DAYTON, OH U.S. Psychotronics Assn.

DECEMBER 30 ST. PAUL, MN EVENING CRYSTAL LECTURE with Judy Mingo
from the P.R.I. lab. Call Judy at 408/279-2291

P.12

VOLUNTEERS The lab has need of services in the following areas: transcribing, typing, artwork, word processing, editing, clerical, grant writing and research. If you wish to help, please contact us at 408/279-2291

WE WOULD LIKE TO EXPRESS OUR THANKS TO THE FOLLOWING PEOPLE WHO DONATED TIME AND LOVE TO P.R.I. to help us in our research: Linda Bonnell, Vernell Cocanour, David Darknell, Lynn Fawcett, Carolyn Forman, Wes Hsue, Maynard McGuinn, Cathy Quintana.

THE CRYSTAL HEALING INSTRUCTORS

The following people can provide interesting and informative lectures on crystal healing. They have all been trained by Dr. Vogel and speak knowledgeably in relation to their particular specialties. All of these instructors will travel.

Loretta Ferrier, Ph.D. Psychologist, Novato, CA 415/898-2111

Bob Fritchie, Ontario, CA (Los Angeles Area), 714/983-5240

Carol Klausner, San Diego, CA 619/298-3815

Warren Klausner, Clairmont, CA 714/621-7105

Judy Mingo, Jennet Grover of the P.R.I. Staff, San Jose, CA 408/279-2291

Note: Rozanne Bazinet, Ph.D. MFCC, has returned to Sacramento, CA her new telephone number is 916/927-3779. Her research abstract #LD-01202 The Effects of Wearing Crystals, is now available from University Microfilms Int'l., 300 N. Zeeb Rd., Ann Arbor, MI 48106

THANK YOU AGAIN FOR YOUR GENEROUS SUPPORT AND DONATIONS. The laboratory has been supported solely by Marcel's lectures, and by the sales of crystals, audio and video tapes. A new product is now available, a crystal, wood and silver medallion. See the article on this device in the newsletter. Thank you for your support. The more private funding donated, the more time Marcel will have to supervise and perform research in the lab. Remember P.R.I. is a non-profit corporation. Help us to help you.



PSYCHIC RESEARCH, INCORPORATED
1725 LITTLE ORCHARD ST., UNIT "C"
SAN JOSE, CA 95125
408/279-2291

Non-Profit Organization
U.S. Postage
Paid
San Jose, CA
Permit No. 5445

Return Requested